



SAILING INSTRUCTIONS

Newport Harbor Yacht Club San Diego
Yacht Club February 15-16, 2019

Amendment #1

- Delete 7.2 and replace with:
“7.2 Course 1: Each boat shall start, leave Catalina Island to port, and finish at San Diego Channel buoy “SD”. “

Purpose: *Deletes reference to mark 1. There is no mark 1. Boats may exit LA Harbor Breakwater by any route.*

- Add Addendum B (illustration of Course 2) B1 and B2. See below.

Purpose: *To clarify start and course for Course 2.*

- 10.1, 7.2.1, and 7.3.1 Add: “This changes NOR 9.”

Purpose: *This properly changes the start area from Pt. Fermin to inside the LA harbor breakwater. This is due to anticipated sea state and difficulty for Race Committee to maintain anchored position.*

- 11 Finishing Line: Delete all reference to “approx.. bearing of 005 mag.”

Purpose: *To avoid confusion w/ actual observed or plotted bearing. Finish location will be precisely as stated.*

- Fleet assignments for ORR 3 and 4 have been amended.

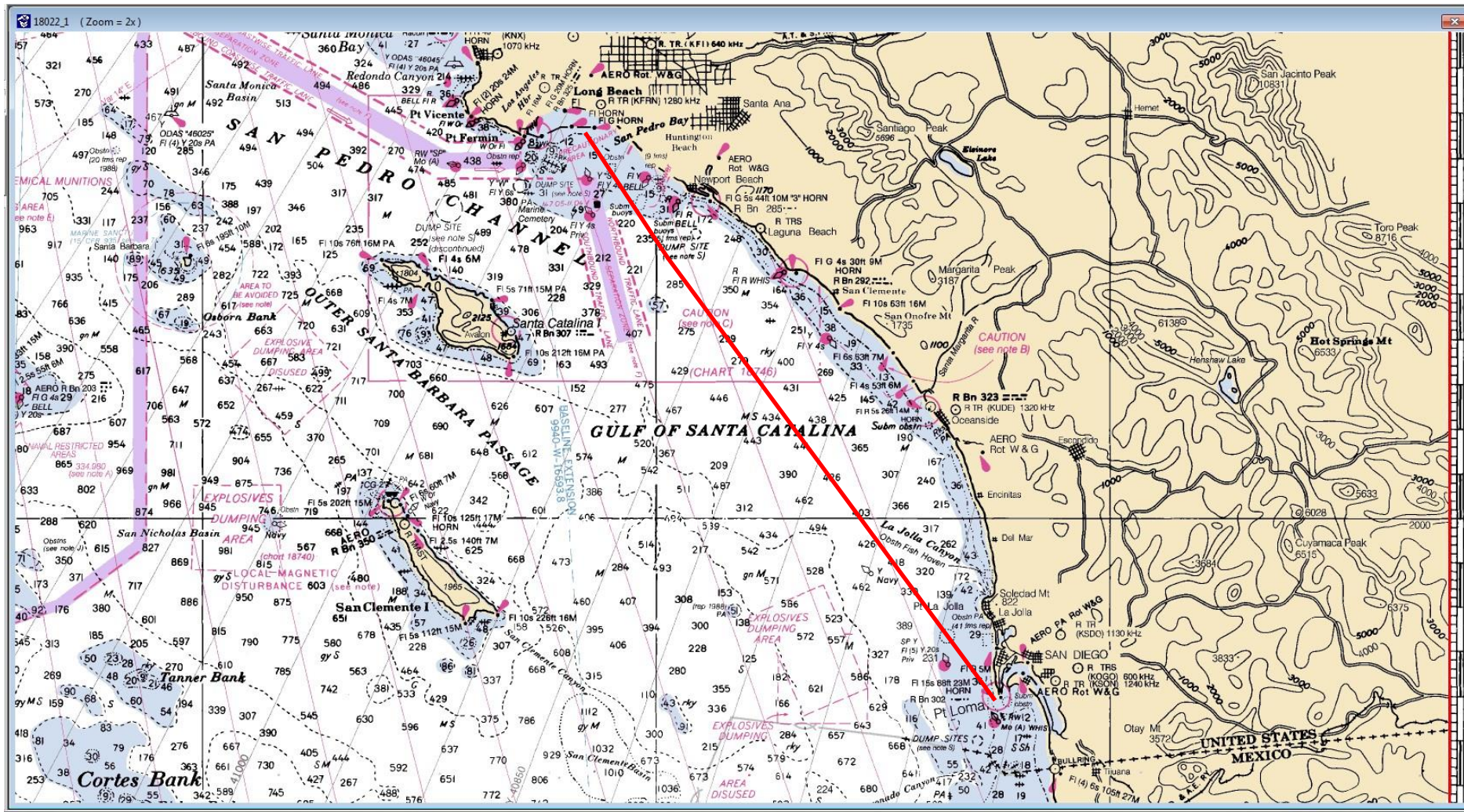
Link to web: https://yachtscoring.com/event_scratch_sheet.cfm?eid=6079

Purpose: *To better align competitors*

Race Committee
February 14, 2019
1000

ADDENDUM B - ILLUSTRATION OF COURSE DETAILS

B1. Approximate Course 2



NOT FOR NAVIGATIONAL PURPOSES



B2. Detail of Approximate Start Area inside Los Angeles Breakwater in vicinity of the oil islands. Course 2.

