



SAILING INSTRUCTIONS

Newport Harbor Yacht Club
San Diego Yacht Club
February 24-25, 2017

1 RULES

- 1.1 All boats in the Islands Race will be governed by the *rules* as described in *The Racing Rules of Sailing* (“RRS”).
- 1.2 The following rules apply to all monohull boats:
 - 1.2.1 US Safety Equipment Regulations (USSER), US Coastal Race level, effective 1/1/2017 , except as changed by the notice of race with additional or replaced requirements which have been adopted from the USSER Ocean category.
 - 1.2.2 PHRF of Southern California (PHRF) is the Rating Authority (RA) for PHRF. Offshore Racing Association (ORA) is the Rating Authority for ORR and ORR-EZ.
 - 1.2.3 The inclusion of the West Coast 70 Sled Class (WC70) has been approved by the OA and will be scored as sub class. For boats competing in the WC70 sub class, their respective class rules will also apply.
- 1.3 The following rules apply to all multihull boats:
 - 1.3.1 The Ocean Racing Catamaran Association (“ORCA”) Racing Requirements, Sections 6, 7 and 8, will apply, as changed herein.
- 1.4 Breaches of instructions which are annotated [NP] will not be grounds for a protest by a boat. This changes RRS 60.1(a). If the jury concludes that a boat has broken one of these rules, or RRS 55, it may impose a penalty other than disqualification.

2 CHANGES TO THE RULES

- 2.1 RRS Part 2, When Vessels Meet, is replaced between the hours of local sunset and local sunrise by “Part B-- Steering and Sailing Rules,” of the International Regulations for Preventing Collisions at Sea (“IRPCAS”).
- 2.2 RRS 48.2 is changed by adding the following sentence to the rule: “Boats shall monitor VHF channel 14 while they are transiting the VTS San Pedro Sector (25nm from Pt. Fermin to the federal breakwater encompassing the port of Los Angeles), and respond promptly when hailed.”
- 2.3 RRS 50.2 Spinnaker Poles; Whisker Poles and RRS 50.3 Use of Outriggers are changed to allow the use of fixed and retractable spinnaker poles and bowsprits for the purpose of setting asymmetrical spinnakers.
- 2.4 RRS 51, Movable Ballast is changed to allow the movement of sails that are not set.
- 2.5 RRS 51, Movable Ballast, and RRS 52 Manual Power are changed to allow the positioning of movable ballast by power on boats as designed and as rated by the rating authority. All movable ballast systems shall be capable of manual operation if powered systems are inoperable.
- 2.6 RRS 55 is changed to allow the disposal of biodegradable material used to band spinnakers in the water.
- 2.7 RRS 62 Redress: RRS 62.1 is changed by adding the following: “(e) being directed by a government authority to deviate from her proper course.”
- 2.8 US Sailing prescriptions to RRS 63.2 and 63.4 do not apply.
- 2.9 RRS 64.1, Penalties and Exoneration, is changed by adding: (d) When the protest committee decides a boat that is a party to a protest hearing has broken a rule, it may assign a time penalty to be added to the boat’s corrected time.”
- 2.10 The Marine Industry Racer (MIR) rule of PHRF of Southern California does not apply to this race.

2.11 Multihull specific changes:

- 2.11.1 Delete ORCA 6.34 and all subparts.
- 2.11.2 Delete ORCA 7.37 and replace with: "All boats shall carry adequate inflatable life raft(s) designed for saving life at sea with designed capacity for containing the entire crew and capable of taking crew off under adverse sea conditions."
- 2.11.3 ORCA 8.43 is modified to require all boats to carry a satellite phone.
- 2.11.4 Add ORCA 8.5: "Annually, two thirds of the boat's racing crew shall practice man overboard procedures appropriate for the boat's size and speed."
- 2.11.5 Add ORCA 8.6: "At least 30% of those aboard the boat, but not fewer than two members of the crew, unless racing single handed, including the person in charge, shall have attended a one day or two day US Sailing Safety at Sea Seminar within the last 5 years, or other courses as accepted by US Sailing."

3 NOTICES TO COMPETITORS

- 3.1 Notices to competitors will be posted on the official notice board online (www.islandsrace.com) and on the supplemental notice boards at NHYC located in the race office trailer wall in the main boatyard and at SDYC located on the east side of the Sailing Center, facing the water.
- 3.2 Changes to the sailing instructions:
 - 3.2.1 **Changes Made Ashore**
Any change to the SI made prior to 1800, Thursday, February 23, 2017 will be posted to the official notice board and the supplementary notice board at NHYC.
 - 3.2.2 **Changes Made Afloat**
Per RRS 90.2(c), any change to the SI made after 1800, Thursday, February 23, 2017 will be announced afloat prior to the warning signal for the class to which it applies. The RC signal boat will display flag "L" to indicate that a change is being made, and the change will be announced via VHF 71.

4 POSITION TRANSPONDER

All boats are required to carry an active position transponder as supplied by the OA. There are no fees associated with this requirement; however boats are responsible for returning the tracker in working order. Broken or lost transponders may be subject to replacement/damage charge of up to \$1000. Transponders will be available at the following times and locations:

- Wednesday, February 22, 1000 – 2100 @ NHYC
- Thursday February 23 between, 1000 – 2100 @ NHYC
- By prior arrangement (call 949-723-6869) between 1100 – 1400 on 2/24/17 in the vicinity of the starting area via NHYC Mark Set Vessel *Twins* on VHF 72.

After the race, transponders should be dropped off at the SDYC Sailing Office between 0900 and 1700 on Saturday, February 25, 2017. If for any reason you are unable to complete the race and return to a port other than San Diego, please call 619-758-6310 and let the Sailing Office know what arrangements you will make to return the tracker.

5 SCHEDULE

Divisions, Flags, and Scheduled warning signals are as follows:

PH Division	Sub Class	Division Flag	Time of Warning
4		Numeral pennant 4	12:25
3		Numeral pennant 3	12:45
2		Numeral pennant 2	13:05
1	WC70	Numeral pennant 1	13:25
Multihull		Pink Flag	13:45

6 CHECK-IN

- 6.1 The race committee intends to be on station beginning at 11:15.
- 6.2 [NP] A boat is required to be in the starting area and check in via radio no later than fifteen (15) minutes before her scheduled warning signal.
- 6.3 A boat shall check in via VHF Channel 72. A boat must announce her name, sail number and number of crew on board and be acknowledged by the RC.
- 6.4 Boats who fail to check in will be scored DNS without a hearing. This changes RRS A4 and A5.

7 THE COURSE

- 7.1 Each boat shall *start*, leave Catalina Island to port, leave mark 2, mark 3, mark 4, mark 5 and mark 6 to port, and *finish* at San Diego Channel buoy "SD".
- 7.2 The diagrams in Appendix A show the course, the order in which marks are to be passed, and the side on which each mark is to be left. The approximate course length will be 129.5 nautical miles.

8 SAFETY AND AREAS OF POTENTIAL CONCERN

- 8.1 All boats shall maintain a proper radio watch (VHF 16) at all times and to heed specific warnings and directives as conditions require.
- 8.2 A boat that retires from the race shall notify the RC as soon as possible with her final destination and ETA ashore. In the event they are unable to contact the RC on VHF 16 or 71, they should call or text 949-464-7917.
- 8.3 The Islands Race crosses a Traffic Separation Scheme. Therefore the race committee would like to call special attention to the RRS Preamble to Part 2 and RRS 48.2 as changed herein. The IRPCAS rule 10 referenced in RRS 48.2 can be found at: <http://www.navcen.uscg.gov/?pageName=Rule10>. Additional information regarding the San Pedro VTC can be found at: <http://www.mxsocal.org/pdf/Files/UserManual.pdf>.
- 8.4 The finish mark is in an area known occasionally to have some kelp growth as well as active subsurface US Navy experiments.

9 MARKS

- 9.1 [NP] The shaded areas shown in Addendum A1 and labeled as “Military Exclusion Areas” are closed to boats and are considered *obstructions*.

Mark	Mark Description	Mark Type
Start	Start pin	Yellow inflatable Buoy
1	Catalina Island	Land
2	Course Mark 2 Exclusion Waypoint 1 – SWAT 1	Lat/Lon Boundary corner 33° 3.38' N, 118° 36.38' W
3	Course Mark 3 Exclusion Waypoint 5 – SWAT 1	Lat/Lon Boundary corner 33° 2.56' N, 118° 37.65' W
4	Course Mark 4 Exclusion Waypoint 4 – SWAT 1	Lat/Lon Boundary corner 33° 0.71.' N, 118° 37.65' W
5	Course Mark 5 Exclusion Waypoint 3 - SHOBALSHGT	Lat/Lon Boundary corner 32° 45' N, 118° 35' W
6	Course Mark 6 Exclusion Waypoint 2 - SHOBALSHGT	Lat/Lon Boundary corner 32° 45' N, 118° 15' W
Finish	SD Bay Approach Lighted Whistle Buoy	Channel Buoy 32°37.33N, 117°14.75W

10 THE START

- 10.1 The starting line will be located near the Point Fermin Buoy at approximately 33° 41.5'N, 118°17.5W.
- 10.2 The starting line will be between a staff displaying an orange flag on the RC signal boat (42' Grand Banks, *Jim Webster*) and the course side of a starting mark.
- 10.3 As a courtesy, the RC will attempt to hail any boat it identifies as OCS via VHF 71. Failure to make a hail or failure of communications equipment will not be grounds for redress. This changes RRS 62.1(a).

11 THE FINISH

- 11.1 The finishing line will be approximately 200 yards long and located between the course side of the Channel Buoy SD and an orange flag on the finish boat bearing 350° magnetic from Channel buoy SD. The race committee will attempt to notify the boat when she has *finished*.
- 11.1.1 In the event circumstances or sea state dictate, a finish boat may be replaced by a yellow inflatable mark. RC vessels may remain in the area to observe a boat's finish and finish time.
- 11.1.2 In the event the finish boat and an inflatable mark are missing, a boat shall record her finish in accordance with the US SAILING prescription to RRS 34. For the purpose of defining “90° to the last leg”, the finishing line will be “the shortest practicable length” or approximately 200 yards long and on an axis defined by Channel Buoy SD and the Point Loma light (sighting to Channel Buoy SD @ 185° magnetic / sighting to the Point Loma light @ 005° magnetic)
- 11.2 When a boat is within 5 nm of Channel Buoy SD, she shall be responsible for attempting to contact the “Islands Race Committee” on VHF 71. This communication should include an estimated time of arrival at the finish line.
- 11.3 The time limit for all boats to *finish* will be 1700 Saturday, February 25. This changes RRS 35.
- 11.4 A boat that fails to *finish* by the time limit will be scored Did Not Finish without a hearing. This changes RRS A4 and A5.
- 11.5 After *finishing*, a boat shall log her finish time from a GPS report in UTC-7 hours. If no contact has been made with the race committee via VHF 71, then as soon as she is safely within San Diego Harbor, a boat shall leave a voicemail or text the RC at 949-464-7917 with the following information: her name, finish time, and a contact number.

12 PROTESTS AND REQUESTS FOR REDRESS

- 12.1 Protest forms are available on the notice board at SDYC. Forms can also be download from the US Sailing website at: <http://www.ussailing.org/wp-content/uploads/DARoot/Race%20Admin/Racing%20Rules/2017-2020%20RRS/USS%20Protest%20form%202017-2020.pdf>
- 12.2 Protests and requests for redress forms shall be delivered within the appropriate time limit.
Forms can be delivered:
- a.) to a person at the dockside room (facing the water in the Sailing Center), or;
 - b.) to a person at the Front Desk at SDYC (available during business hours only), or;
 - c.) by taking a photo of the first page of the form and either texting it to 949-464-7917 or emailing it to jenn.lancaster@nhycstaff.org.
- 12.3 The protest time limit for all boats is 1830, February 25, 2017, or 90 minutes after the last boat *finishes*, whichever is earlier. That time will be posted.
- 12.4 Notices of protests and requests for redress filed will be posted and updated as quickly as possible to inform boats of hearings in which they are parties or named as witnesses. Hearings will be held in the Dockside room located on the first floor of the Sailing Center at SDYC, and may be heard as soon as the *parties* are available.
- 12.5 Notices of protest by the race, technical or protest committees will be posted to inform boats under RRS 61.1(b).
- 12.6 A request for redress based on a protest committee decision shall be delivered no later than 30 minutes after the decision was posted. This changes rule 62.2.

13 SCORING

- 13.1 Monohull PHRF Category (Overall and Divisions)
- 13.1.1 PHRF Divisions will be scored using a boat's PHRF corrected time, calculated by multiplying her elapsed time by her time correction factor ("TCF").
 - 13.1.2 The RC will score all monohull boats, regardless of a boat's division, for the overall award using a boat's PHRF corrected time, calculated by multiplying her elapsed time by her time correction factor ("TCF").
 - 13.1.3 WC70 sub class corrected time will be calculated by multiplying her elapsed time by her ORR Off wind TCF.
- 13.2 Multihull Category - A boats' corrected time will be calculated by multiply her elapsed time by her ORCA handicapped rating.

14 PRIZES

- 14.1 The first monohull boat to finish will be commemorated on the Albert Soiland perpetual trophy and will receive a take-home trophy.
- 14.2 The overall monohull winner, scored on corrected time, will be commemorated on the Delaney perpetual trophy. The overall winner and the boats that earn the overall second- and third-place scores will receive take-home trophies.
- 14.3 The overall multihull winner, scored on corrected time, will be commemorated on the Stars&Stripes perpetual trophy and will receive a take-home trophy.
- 14.4 The top boats in each category scored on corrected time in all divisions will receive take-home trophies.

15 DISCLAIMER

Sailing is an activity that has an inherent risk of damage and injury. Competitors in this race participate entirely at their own risk. See RRS 4, Decision to Race. The race organizers (OA, RA, Race Committee, Protest Committee, host clubs, sponsors, or any other organization or official) will not be responsible for damage to any boat or other property or the injury to any competitor, including death, sustained as a result of participation in this race. By participating in this race, each competitor agrees to release the race organizers from any and all liability associated with such competitor's participation in this event to the fullest extent permitted by law.

END

CONTACTS**Race Committee**

RC Signal Boat (START):

42' Grand Banks, *Jim Webster*

Primary: VHF 71

Secondary – CHECK IN: VHF 72

24-hour emergency contact: 949-464-7917

Newport Harbor Yacht Club

Jenn Lancaster, Race Director

949-723-6869

San Diego Yacht Club

Front Desk, 9a-7p

619-221-8400

Jeff Johnson, Race Director

619-758-6310

Vessel Assist Catalina Island/ Boat US

Avalon, CA

24-hour Contact: 310-510-1675

U.S Coast Guard Rescue Coordination Center

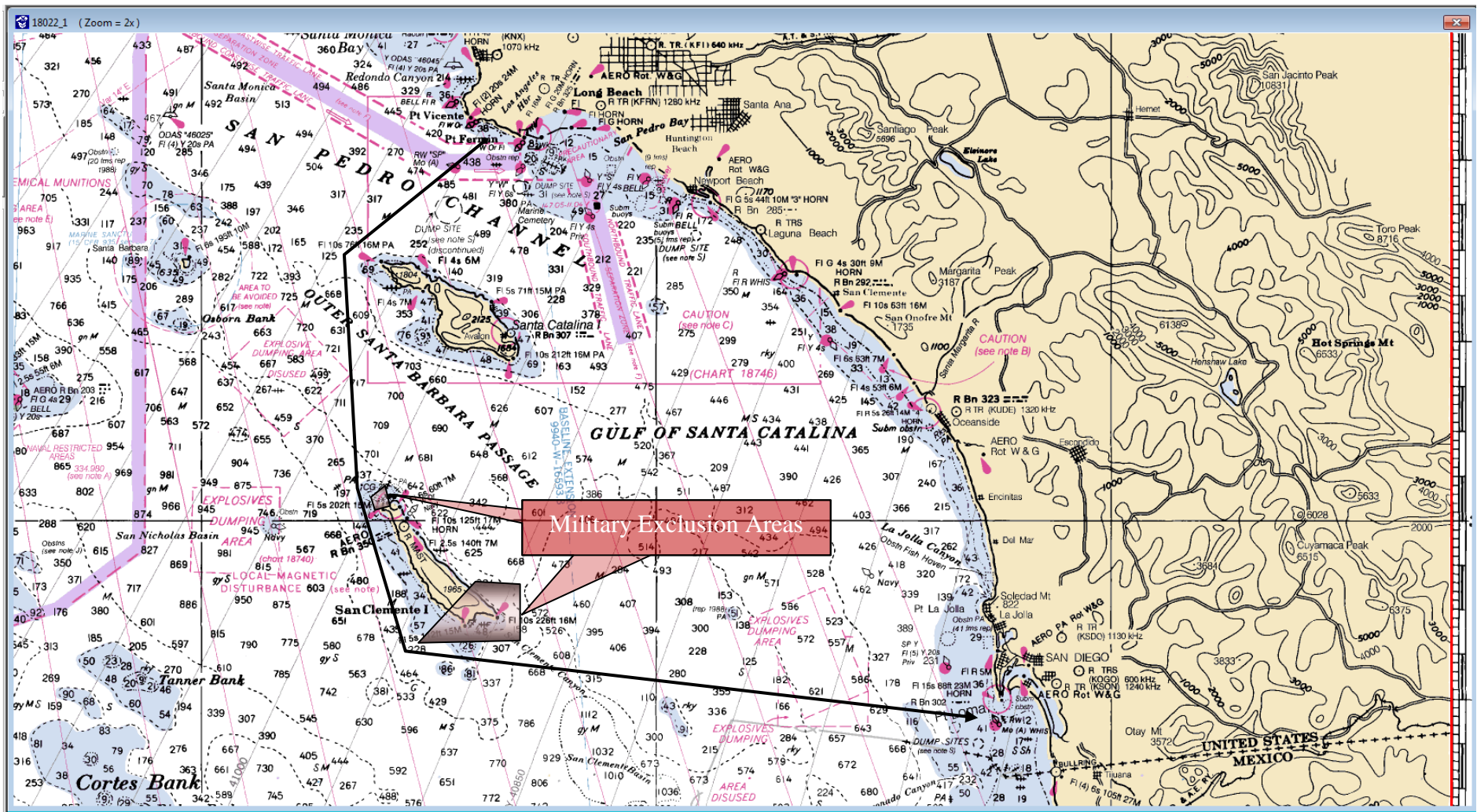
VHF 16

24-hour Emergency Contact: 510-437-3700

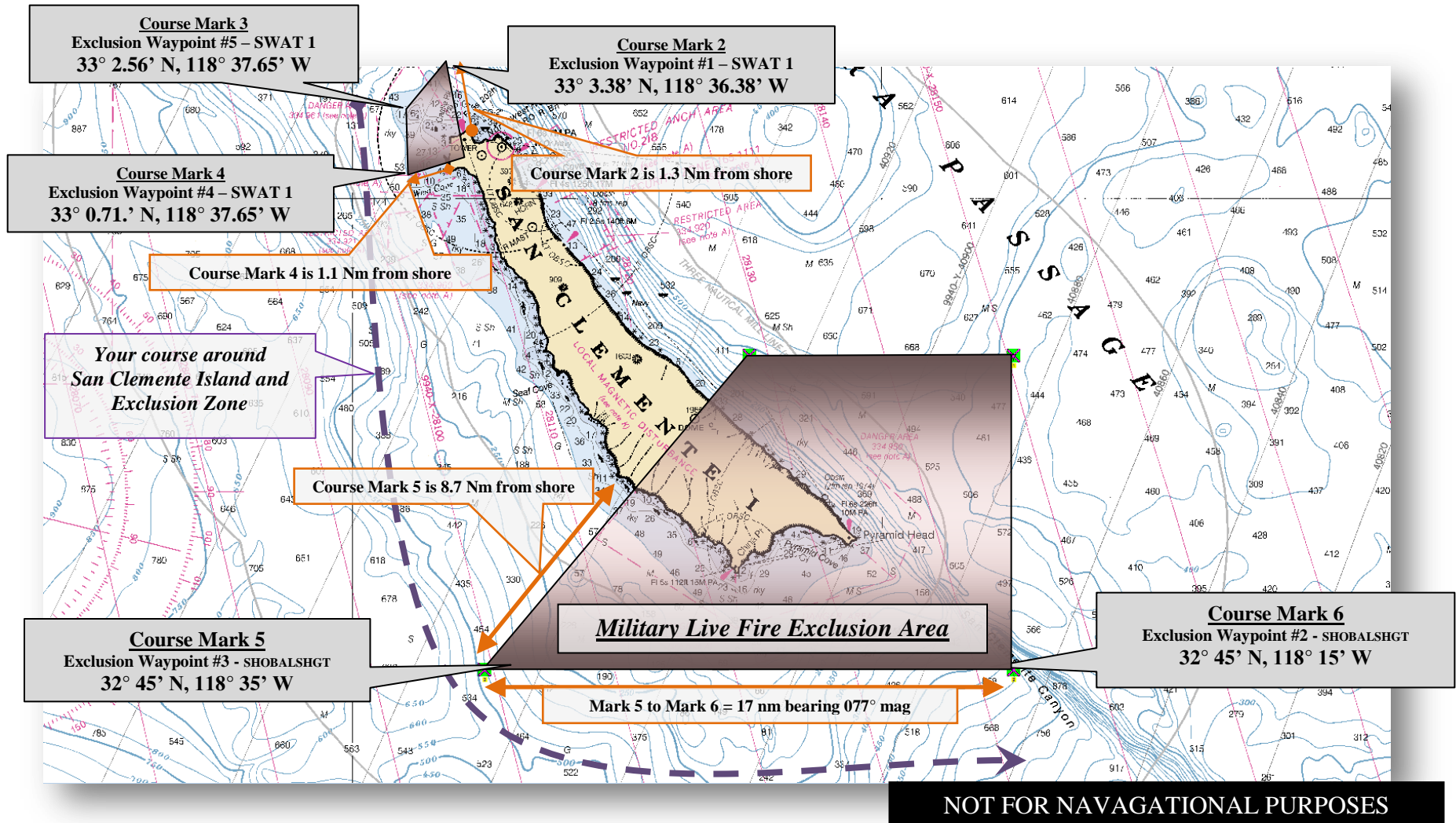


A. ADDENDUM A - ILLUSTRATION OF COURSE DETAILS

A1. Approximate Course



A2. Detail of Course around San Clemente Island and Naval Exclusion Zone



Detail of Approximate Finish Area South of Point Loma

